



AEROVISTA

RESIDENTIAL APARTMMENT





INTRODUCE TONEXT GEN. lifestyle

Nestled in the heart of elegance and crafted for those who desire the extraordinary, Aerovista redefines urban sophistication. It offers impeccably designed 2 & 3 BHK apartments that blend architectural brilliance with top-tier amenities, promising a lifestyle of unparalleled comfort and class.

Aerovista ...Rise above the expected. Live above the rest.





Welcome Home to Elegance

Aerovista's grand entrance creates a lasting first impression with its sweeping driveway, a stunning lobby adorned with premium imported finishes and warm wooden accents. Experience unmatched hospitality with concierge service, valet assistance, and advanced security — setting the tone for a lifestyle of comfort and sophistication.



Where Elegance Meets Excellence

Thoughtfully designed to blend timeless elegance with modern functionality, this space isn't just where business begins — it's where impressions are made. From refined interiors to a seamless ambiance, every element speaks the language of success.



The Grand Welcome

Step into a world where design meets distinction. Our grand lobby is a masterpiece of modern elegance — where sculpted forms, rich textures, and refined furnishings come together to create a space that is both welcoming and awe-inspiring. Soaring glass walls flood the room with natural light, revealing a seamless connection between the interiors and the lush exterior landscape





Crafted Kitchens for Elevated Living

Aerovista kitchens are a perfect blend of luxury, functionality, and modern aesthetics. Designed with custom European layouts, each space features a chef's island with integrated seating, concealed cabinetry, and thoughtfully planned storage to keep everything within reach yet out of sight. State-of-the-art appliances from global brands like Sub-Zero, Miele, and Wolf add unmatched performance and elegance. From the under-mount stainless steel sink to the built-in wine storage and concealed dishwasher, every element is chosen to enhance daily living. Finishing it all are lavish countertops and designer backsplashes – making your kitchen not just a place to cook, but a space to experience.









A Sanctuary of Style & Serenity

Step into master bathrooms that blend European elegance with everyday comfort. Featuring refined marble finishes, designer fixtures by Grohe and other premium brands, each space is crafted to deliver a spa-like experience at home. Many residences offer separate his and her master baths, complete with spacious spa tubs, walk-in showers, and thoughtfully curated accessories – creating a private retreat for relaxation and rejuvenation.



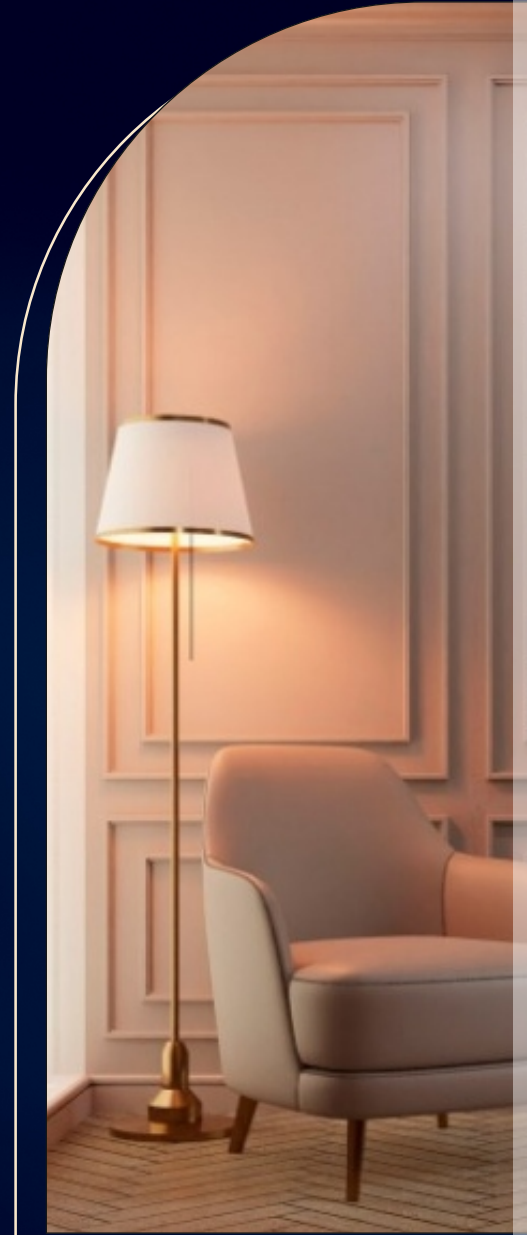


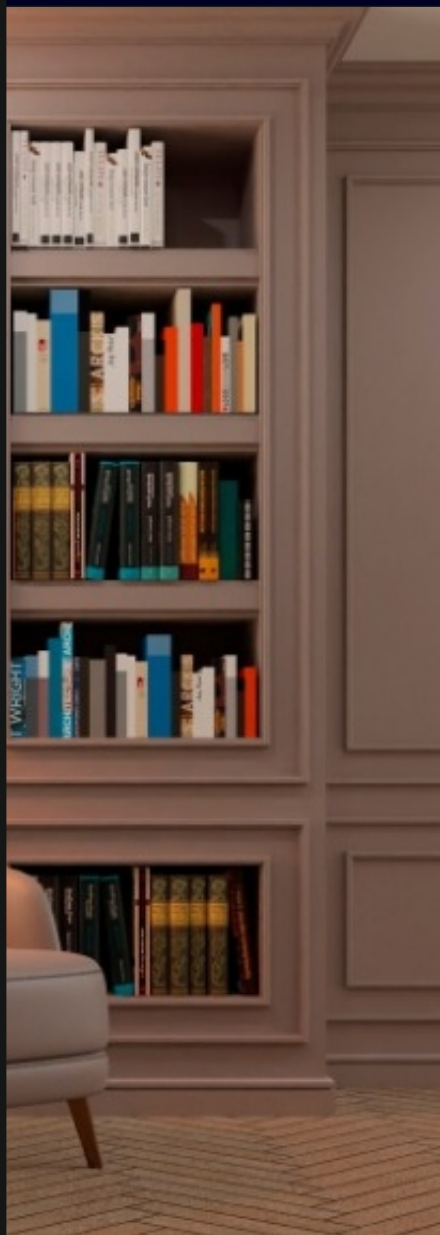
Stylishly Outfitted Club Aerovista

Unwind, entertain, or connect in Aerovista's elegantly designed club room – a perfect extension of your home.

Featuring ambient lighting, a private kitchen with dining space, plush lounge seating, integrated audio-visual setup, and a sophisticated bar with a curated wine feature, this space is thoughtfully crafted for both quiet moments and lively gatherings.







A World Within Crafted for Every Mood

From elegant gatherings in the Multipurpose Hall to movie nights, playful escapes, focused reading, or productive work sessions — this chapter celebrates community, comfort, and creativity under one roof.

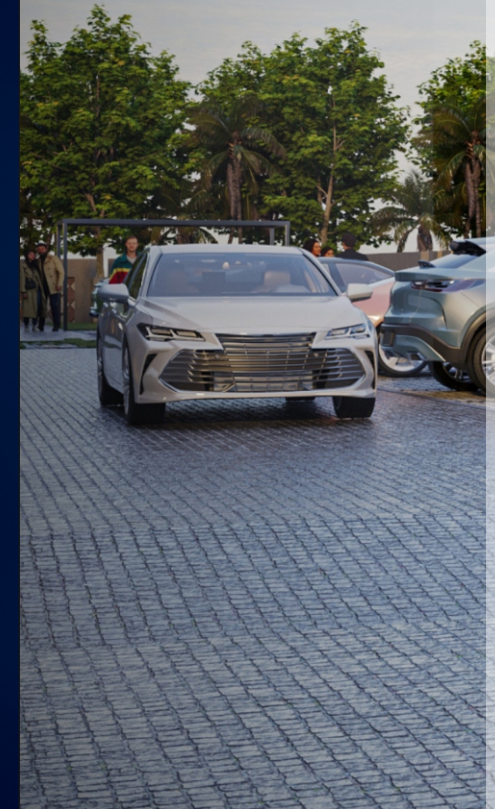
Vibrant Outdoor Living

FOR PLAY, LEISURE & COMMUNITY

Experience the expansive outdoor spaces of Aerovista – where fun meets function. From a lively kids' play zone and tranquil garden seating to a dedicated multi-sport court, every zone is designed for all generations. Whether it's morning workouts or evening gatherings, recreation and connection come naturally here.





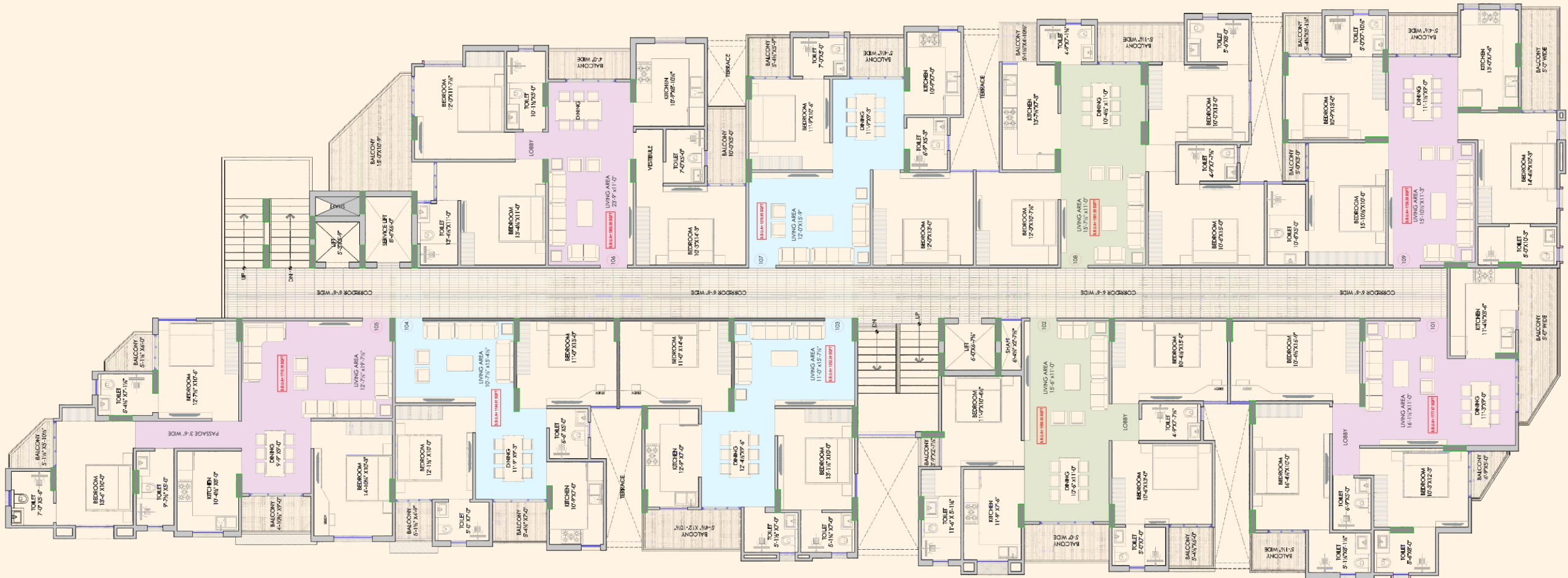
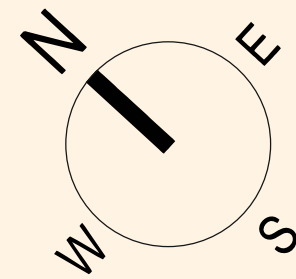




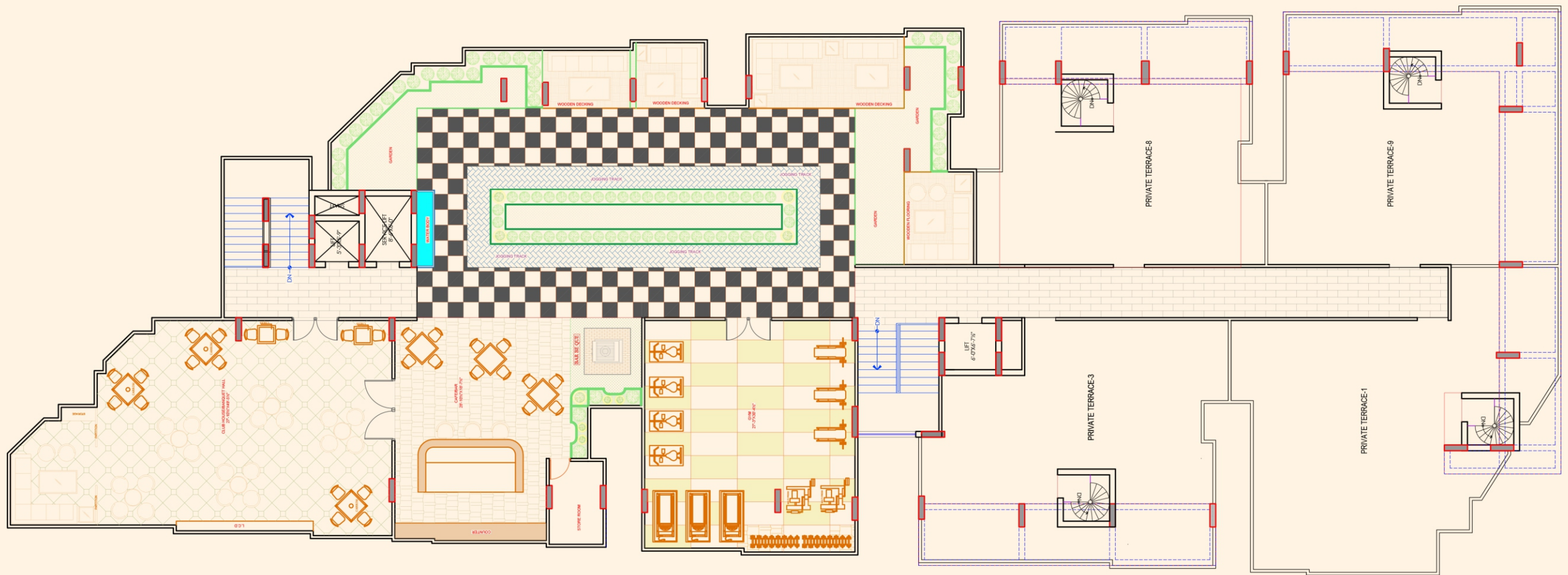
A World Within, Crafted for Every Mood

Find your perfect escape in Aerovista's thoughtfully curated open-air zones. Lounge in shaded seating spaces, enjoy serene moments at the temple, or host vibrant evenings in the multipurpose garden pavilion. With areas designed for peace, play, prayer, and parties — this is where community living thrives in every shade.

TYPICAL FLOOR PLAN



TERRACE LAYOUT PLAN



THE LUXURY OF LOCATION

Where Convenience Meets Culture

EASY ACCESS FROM EVERYWHERE

• Airport	8.5 km
• Metro Station	8.0 km
• Gandhi Nagar Railway Station	10 km
• Durgapura Railway Station	7.5 km
• Durgapura Bus Stand	7.5 km
• Jaipur Junction	15 km
• ISKCON Temple	2.0 km
• Petrol Pump	0.5 km

HEALTH AT YOUR DOORSTEP

• Dhanwantari Hospital	4.9 km
• Fortis Hospital	8.5 km
• Metro Mas Hospital	7.0 km
• SMS Hospital	15 km
• Mahatma Gandhi Hospital	15 km
• Saket Hospital	4.5 km

EASY DAILY CONVENIENCES

• Mansarovar Plaza	5.0 km
• Big Bazar	7.0 km
• Reliance Fresh	4.5 km
• Vijay Path Market	4.5 km

MAJOR BANKS / ATMS

- SBI • HDFC • Axis • BOI • Kotak • ICICI

WORLD CLASS EDUCATION AT PROXIMITY

• Neerja Modi School	7.0 km
• Seedling Modern High School	6.0 km
• Arvind Shri Vidya Mandir	5.0 km
• St. Wilfred's College	4.0 km
• St. Anselm's School	6.0 km
• IIS University	4.0 km
• India International School	7.0 km

LOCATION MAP

Map not to scale.





Architech

Marketed By:



Disclaimer: All images, plans, layouts, specifications, dimensions, and other details mentioned in this brochure are indicative and for representational purposes only. They are subject to change without prior notice at the sole discretion of the developer or competent authorities. This brochure does not constitute a legal offer or contract. Customers are advised to verify all details, including project approvals, amenities, and configurations,